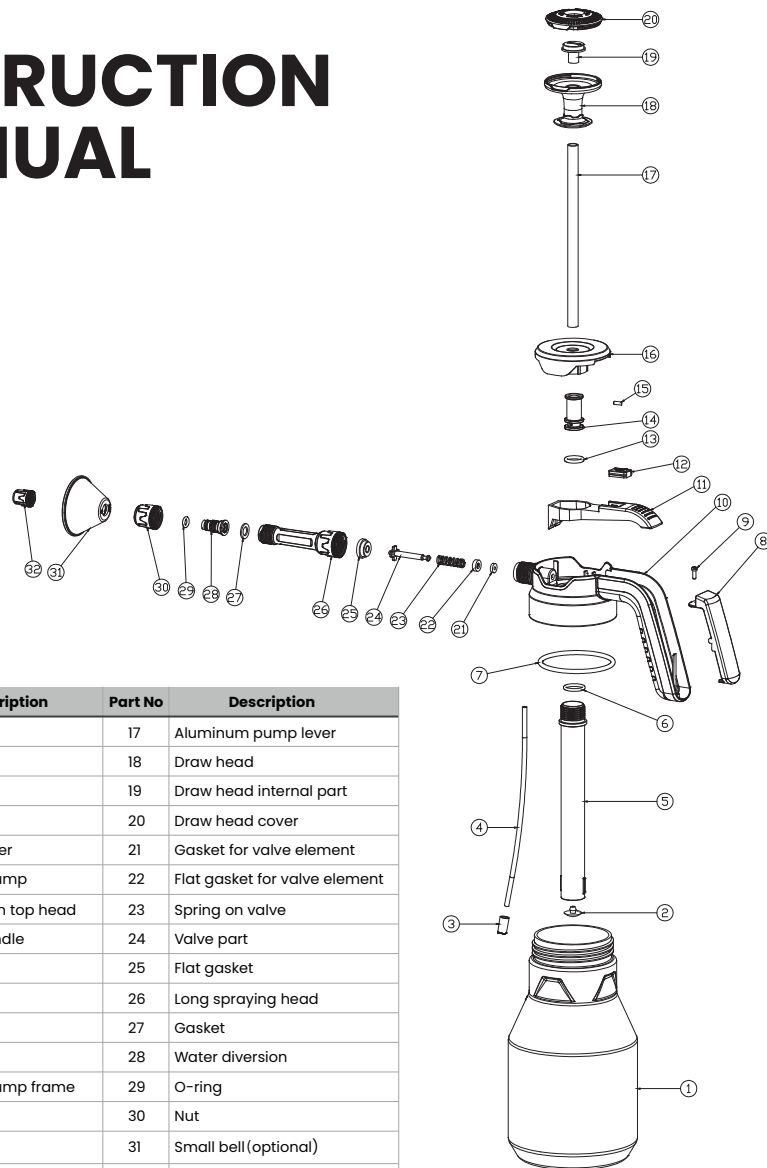
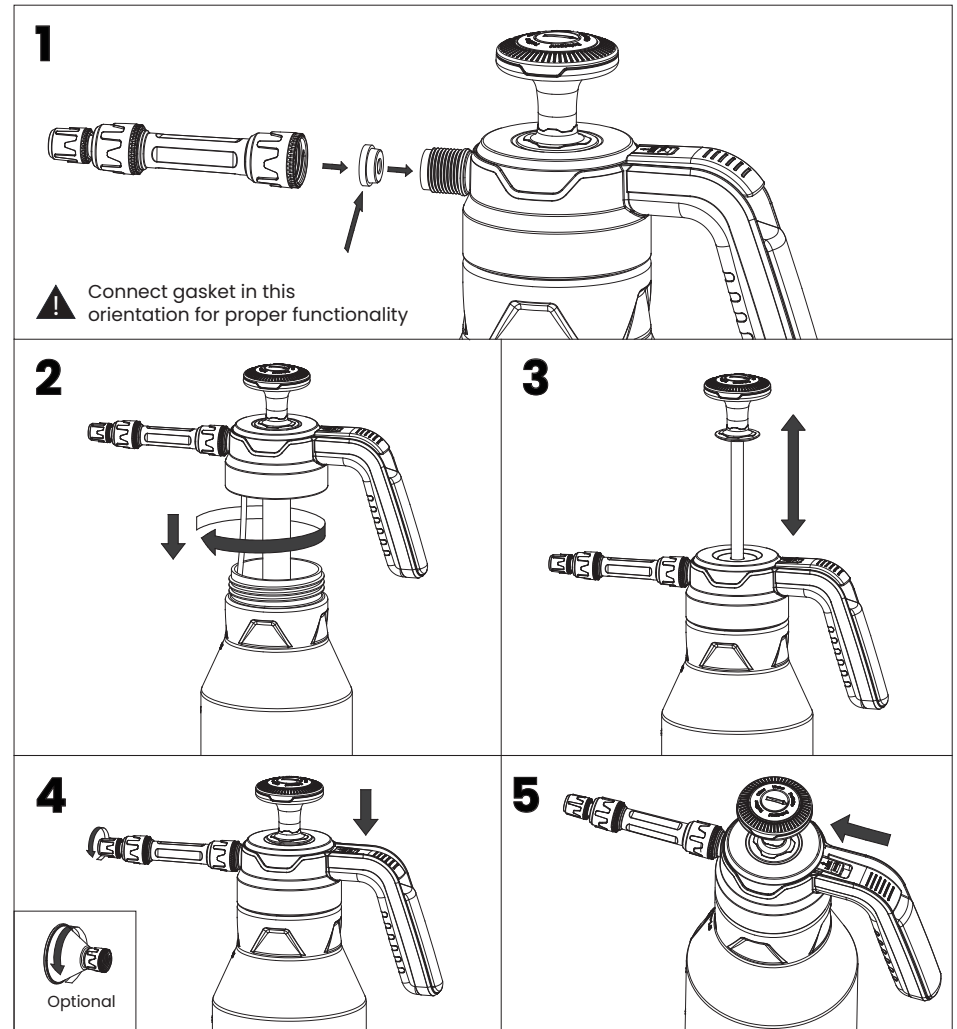


INSTRUCTION MANUAL

S010454



Part No	Description	Part No	Description
1	Tank	17	Aluminum pump lever
2	Valve	18	Draw head
3	Filter	19	Draw head internal part
4	Pipe	20	Draw head cover
5	Pump cylinder	21	Gasket for valve element
6	O-ring for pump	22	Flat gasket for valve element
7	Big gasket on top head	23	Spring on valve
8	Cover of handle	24	Valve part
9	M3X12 screw	25	Flat gasket
10	Top head	26	Long spraying head
11	Trigger	27	Gasket
12	Trigger lock	28	Water diversion
13	O-ring for pump frame	29	O-ring
14	Pump frame	30	Nut
15	Pin	31	Small bell (optional)
16	Cover of top head	32	Nozzle



1 - Assemble the spraying head, gasket to the cover, pay attention to the gasket two sides direction.

2 - Un-Screw top part, fill with the desired liquid to the max fill line as shown on bottle, screw top part tightly in clockwise direction.

3 - Pumping around 20 to 25 times.

4 - Adjust nozzle for mist or jet spraying and press down trigger.

5 - Lock the trigger for continuing spraying.

After using, pour out the remaining liquid and clean with water.