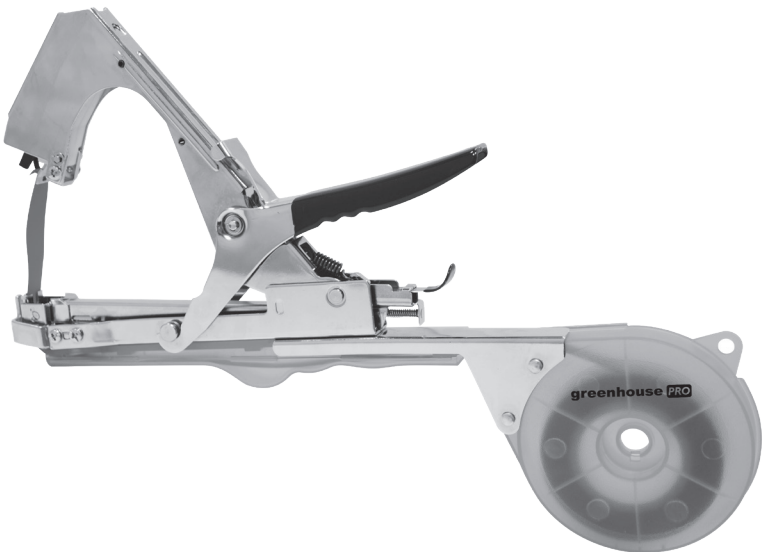
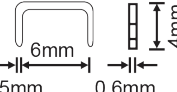
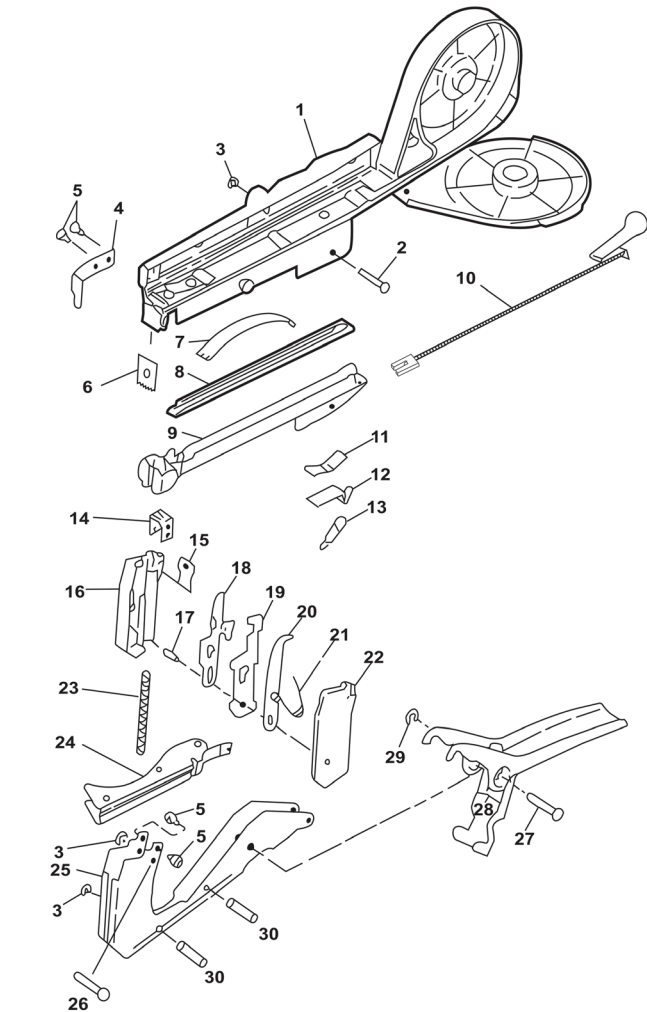


Instruction Manual For Handy Tie Gun



SPECIFICATIONS

Name	Handy Tie Gun T009242	
Staples Used	T009244 Handy Tie Staples	
Tape Used	T009243 Handy Tie Tape (single) T009245 Handy Tie Tape (5pc)	
Weight	510 grams	
Bundling Limit	MAXIMUM 53m/m ø x PARALLEL 21m/m ø	
Staples		



PARTS LIST

1	A-Type Handle Unit	16	A-Type Case
2	Step Pin	17	Straight Pin
3	E-Type Retaining Ring 2.3	18	Push Rod
4	Rod Holder	19	Clutch Plate
5	Plus Pan Head Machine Screw 3 x 4	20	Tape Catch Unit
6	Blade	21	Torsion Coll Spring
7	Leaf Spring	22	B-Type Case
8	Staple Cover	23	Compression Spring
9	Magazine Unit	24	Cover
10	Pusher Unit	25	Clincher Arm
11	Leaf Spring	26	Step Pin
12	Hook	27	Step Pin
13	Tension Spring	28	B-Type Handle Unit
14	Clincher	29	E-TYPE Retaining Ring 3.0
15	Support Plate	30	PIN 3x15

How to use

How to load staples

1. Hold the body with left hand, push up the Knob of the pusher unit with right hand, and pull it out backwards (Fig. A)
2. Pick up the staples with right hand and load them into the magazine unit with the staple legs pointing downward; then set them in the pusher unit. You can load 200 staples of 604C type or 150 staples of 604E. (Fig. A)

How to open tape holder

1. Put your finger on UP part then open the cover with the thumb pressing the UP part.

How to load tape

1. Open the tape holder cover as mentioned previously, and load the tape as shown, and then close the cover until it “snaps”. (Fig. A)
2. Set the tape, hold lightly the head of the A type handle unit with left thumb, and pull the tape downward with right fingers. The tape will be set in the tape guide. (Fig. A)

How to pull out tape

1. Squeeze the handle so that the tape catcher will catcher the tape end. (Fig. B) **Note** : After the tape catcher has caught the tape end, do not press the handle harder the tape catcher will go back to its normal position, resulting in no pressing of the tape.
2. Release the handle as explained above. The tape will then be pulled out. (Fig. C)
3. It might happen that the tape catcher will not catch the tape end when you press the handle. (This is not trouble with the tape gun.) If this happens, press the handle harder several more times, and the tape catcher will return to its normal position. **Note:** This should be done only when the tape catcher does not catch the tape end.

How to bundle objects

1. Press the tape against the object until it is positioned inside the tape gun. (Fig. D)
2. Then, press the handle fully with the tape positioned centrally, and the object will be bundled by both the tape and staple, simultaneously, the tape is cut off. (Fig. D)

How to correct stuck staples

1. Disconnect Pusher Unit and remove the loaded staples. Then remove the stuck staples (Fig. F)

For more information please contact Holland Imports
Tel: (604) 299-5741

Fig. A

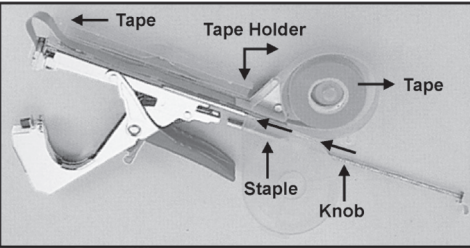


Fig. B

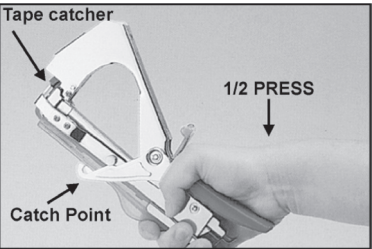


Fig. C

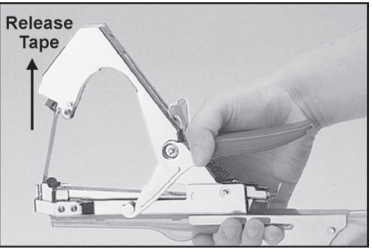


Fig. D

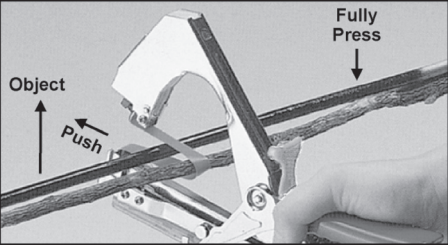


Fig. F

