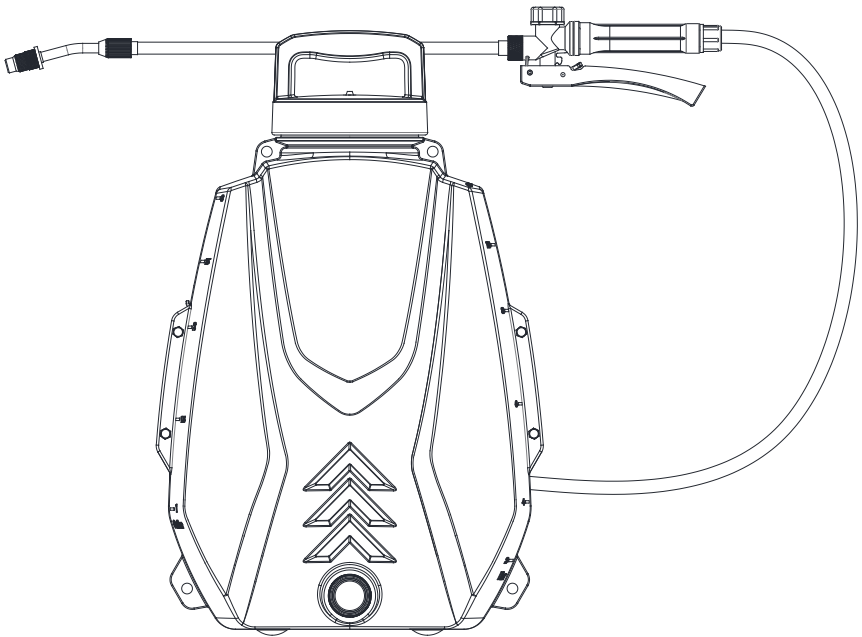


Instruction Manual For 12L Battery Sprayer

S010402

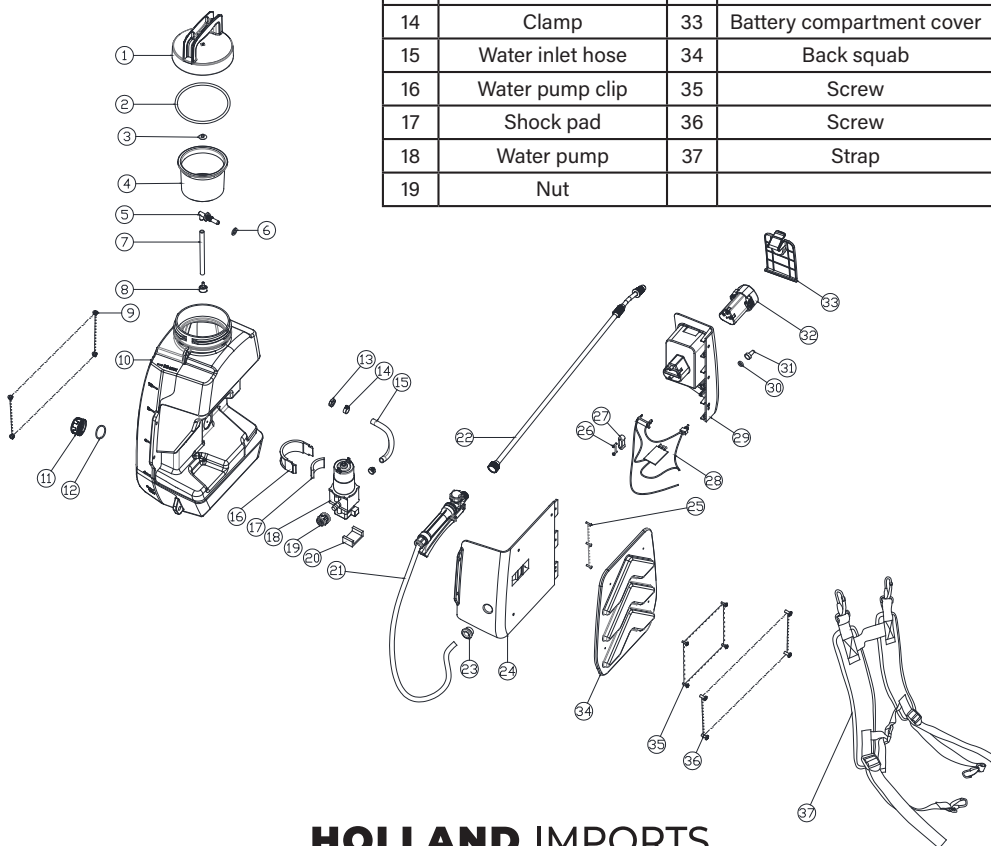


Warning: For your personal safety,

READ and UNDERSTAND before using.
SAVE THESE INSTRUCTIONS FOR FUTURE REFERENCE.

Assembly:

No.	Name	No.	Name
1	Cap	20	Shock pad
2	Cap O-ring	21	Hose
3	Valve	22	Lance
4	Filter	23	Gasket
5	Connector	24	Back cap
6	O-ring for Connector	25	Screw
7	Pipe tube	26	Screw
8	Inlet water filter	27	Clip for circuit board
9	Screw	28	Circuit board compartment
10	Tank	29	Battery compartment
11	Cover	30	Nut
12	O-ring in cover	31	Switch cover
13	Plastic Nut	32	Li-Ion battery
14	Clamp	33	Battery compartment cover
15	Water inlet hose	34	Back squab
16	Water pump clip	35	Screw
17	Shock pad	36	Screw
18	Water pump	37	Strap
19	Nut		



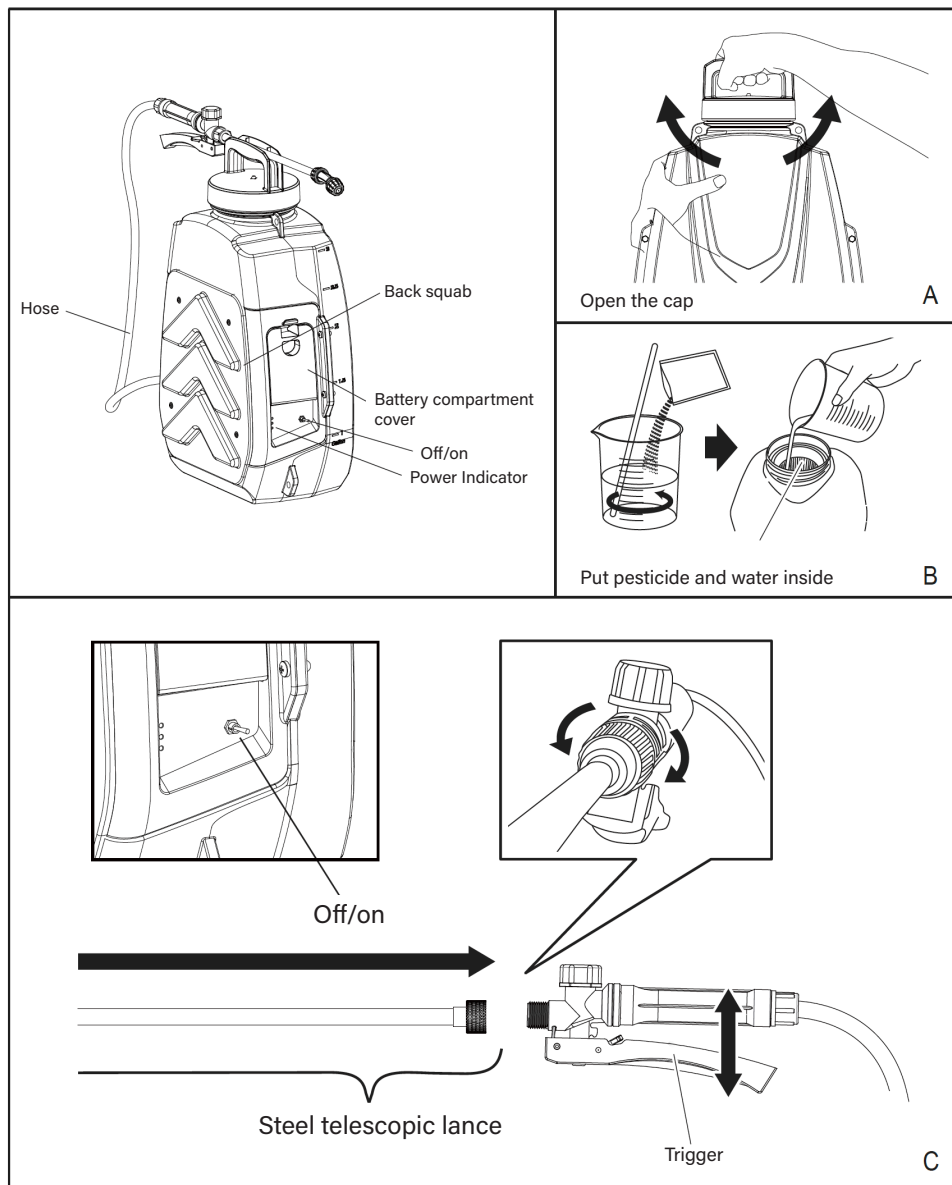
Safety instructions and cautions for lithium battery:

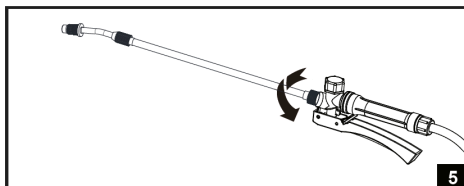
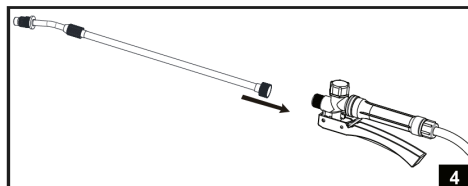
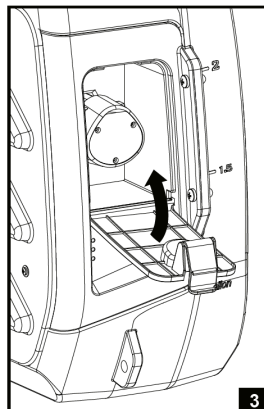
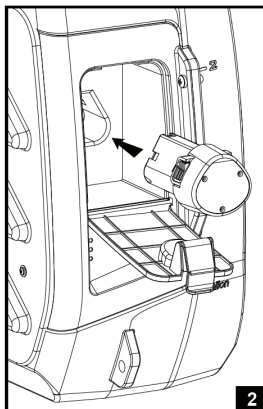
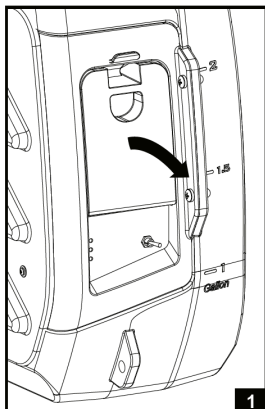
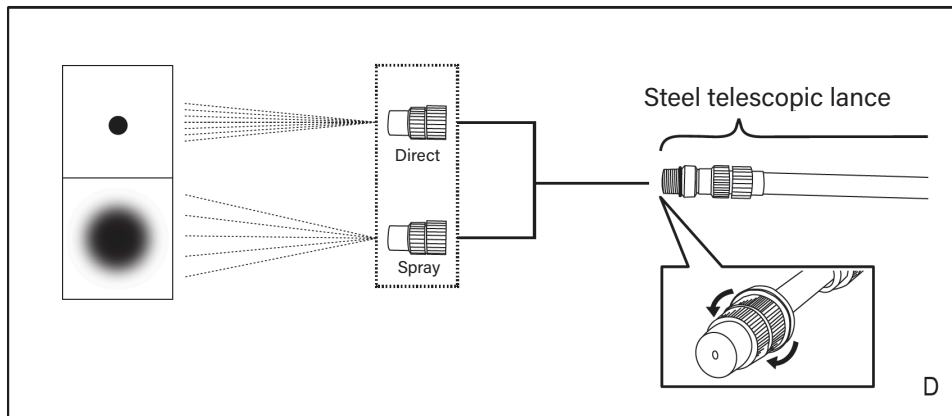
- Lithium battery needs to be charged indoors not outdoors to avoid accidents.
- When the lithium battery needs charging, remove it from the sprayer and plug in the charger. If the light is red the battery is charging; when the light is green the battery is fully charged.
- The charger can only be used with this battery and it is prohibited for other use to avoid overcharging or shortening the battery's life. The battery and charger must be removed from the electrical outlet when charging is complete.
- Please only use the charger provided; if any other charger is used the battery may not work properly or may cause a fire or explosion.
- If you think the charger or lithium battery has been damaged or does not work properly, please contact the manufacturer or distributor at once, DO NOT use the damaged unit.
- For uncharged lithium battery, the capacity of the battery determines the charging time. If the charging indicator lights don't respond unplug the power adapter.
- When charging the lithium battery, it is best not to overcharge to avoid shortening the life of the battery.
- If the lithium battery has not been used or stored correctly it may not hold a charge. For best results charge once every six months to prevent the battery from being completely drained or damage to the internal structure.
- Store in a cool dry environment with room temperature between 15 to 35 degrees Celsius and no more than a relative humidity of 65%.

Warning:

- It is prohibited to place the battery into seawater or water – store in a cool, dry environment when not in use.
- It is prohibited to put the battery near a heat source, such as fire, heater, etc.
- It is prohibited to reverse charge the battery.
- It is prohibited to throw the battery in a fire or to heat in a container.
- It is prohibited to use metal on the battery cathode which could cause a direct short circuit.
- It is prohibited to transport or store the battery with metal.
- It is prohibited to break open the battery.
- It is prohibited to use around electrostatic or magnetic fields.

Operating instructions:



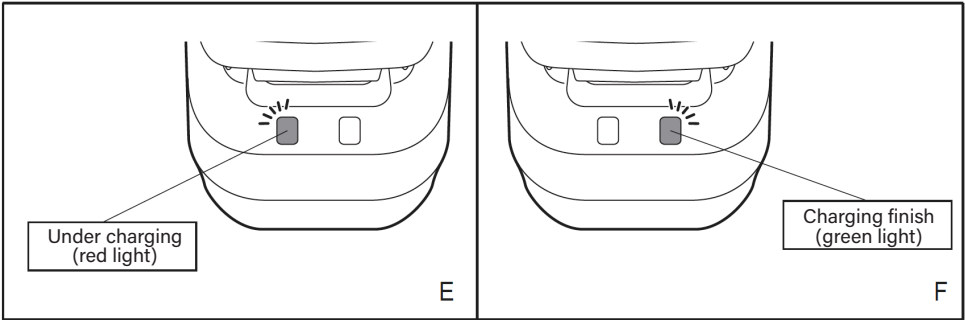


Assembling instruction:

1. Please open the battery cap as pic 1 in above.
2. Put battery(NO.32 in page 2) inside the machine. Please refer to pic 2 in above.
3. Close the battery cap as pic 3 in above.
4. Take out lance and trigger as pic 4 in above.
5. Screw the nuts in lance to the trigger as pic 5 in above.

How to use charger:

- 1. Remove the battery from sprayer.
- 2. Put the battery into charger.
- 3. Plug the charger into power outlet.
- 4. It is charging when the red light (E) comes on, after approximately (2.5 hours)
- 5. Remove the battery when charging is complete, disconnect power.



Product information/technical data:

Item No.	S010402
Total capacity	12.0L
Voltage	12V
Current flow	1.3A
Battery capacity	2.5 Ah-2.6Ah
Work time	120min
Charging time	150min
Flow	0.95L/min

Maintenance of equipment:

- 1. Remove the battery after use and recharge it if fully discharged.
- 2. Clean the machine by water.
- 3. Put the machine in a cool and dry place.

Troubles shooting:

Problems	Causes	S010402
The motor fails to start after being powered on	1. The power cables come off 2. The battery is out of power 3. The power switch has been damaged	1. Dismantle the base to connect the cables only 2. Charging 3. Replace the switch
Water cannot go out	Filter maybe clogged	Open the bottle and take out the filter to clean it

Safety instructions:

CAUTION: CONTENTS UNDER PRESSURE READ THIS BEFORE OPERATING.

- Always wear protective clothing, gloves, eyewear and mask when spraying.
- Suitable measures must be taken to keep the unit out of the reach of children.
- If spraying in light wind conditions, always spray downwind of yourself and others.
- Do not spray contents of sprayer at people or animals.
- Ensure all parts are intact and the temperature of the liquid is under 40 degrees Celsius before each use.
- Chemical sprays are dangerous if swallowed or comes in contact with the skin, always refer to the chemical supplier safety instructions or contact the poison information centre or a doctor immediately.
- Always release pressure before refilling, servicing or storing.
- Do not leave the sprayer (filled, empty or pressurized) unattended in direct sunlight.
- Not to be used to spray solvents or flammable liquids



WEAR PROTECTIVE CLOTHING



WEAR EYE PROTECTION



WEAR GLOVES



WEAR A.S APPROVED FILTER MASK